



Shared health
Soins communs
Manitoba

WORKING TOGETHER TO BUILD A PROVINICAL HEALTH SYSTEM

LONG TERM & CONTINUING CARE ASSOCIATION OF MB
May 15, 2018

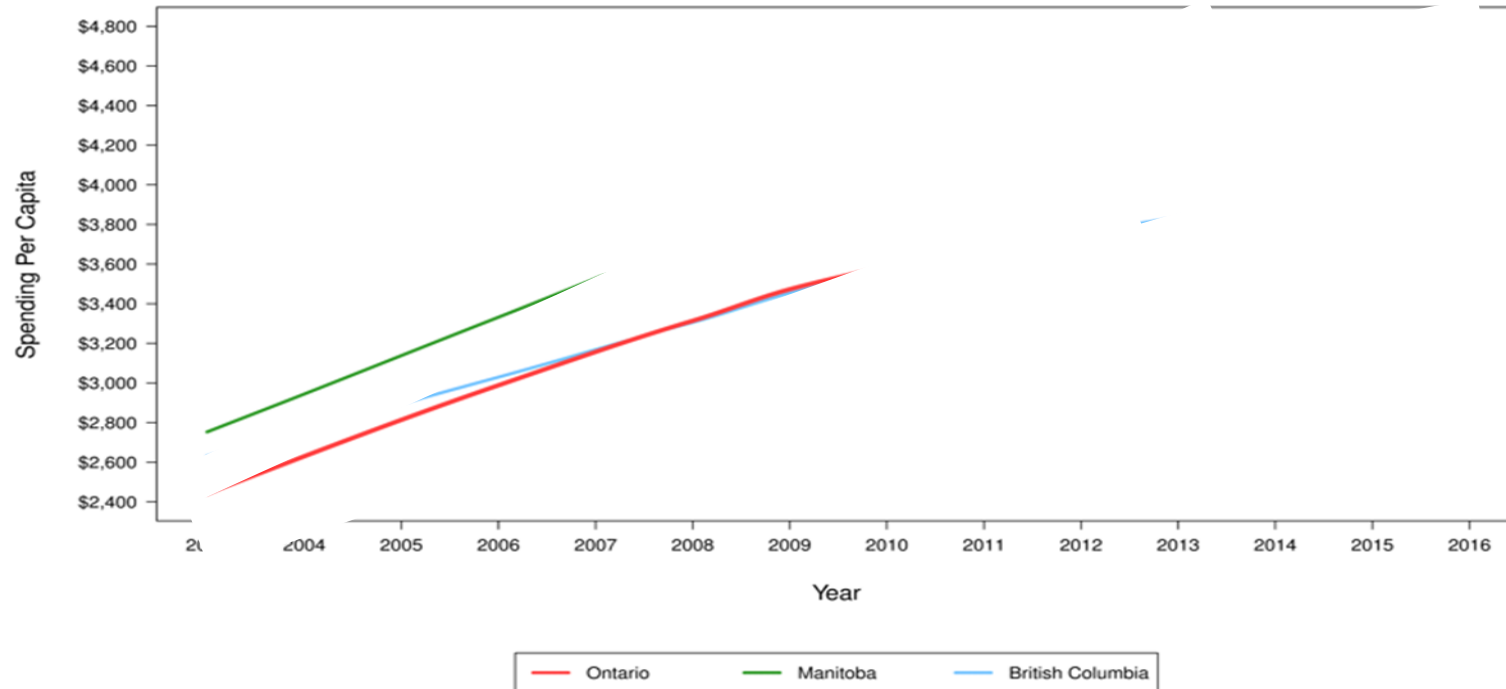
Dr. Brock J. Wright
CEO, Shared Health

Presentation ...

- ❑ **The Burning Platform**
- ❑ **Clinical and Preventive Services Planning**
- ❑ **Shared Health**
- ❑ **Long Term Care**
- ❑ **Discussion**

Total Health Expenditures

The per capita cost curves have been bent in Ontario and B.C.



Source: National Health Expenditure Trends, 1975 to 2016

1. In 2003, per capita health expenses were similar in Manitoba, Ontario and B.C.
2. Manitoba's health expenditures per capita increased by 72% from 2003 to 2016.
3. Ontario and B.C. had much lower increases in per capita spending than Manitoba.

Challenges ...

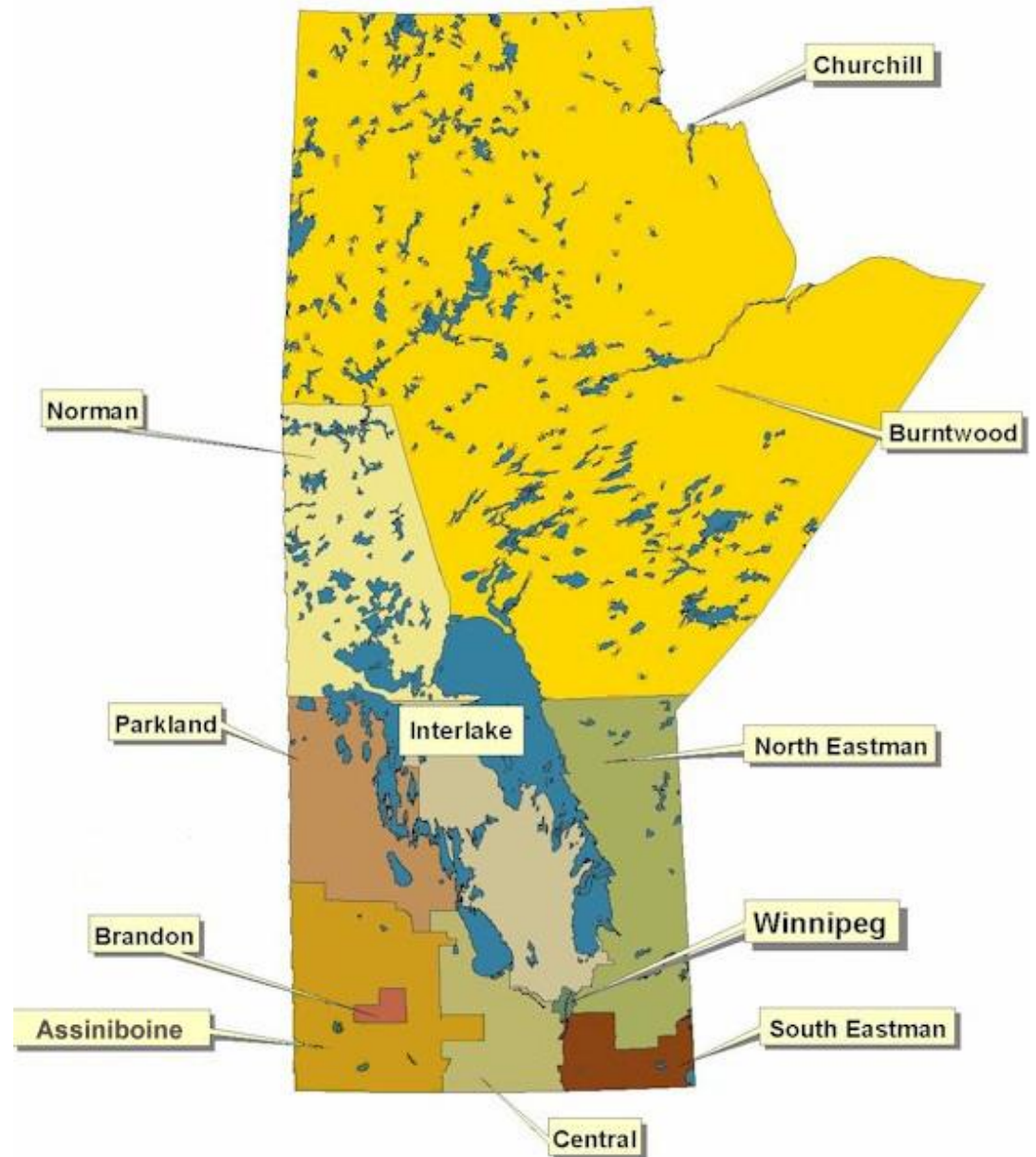
- ❑ **Fiscal Sustainability**
- ❑ **Equity**
- ❑ **Indigenous Health**
- ❑ **Mental Health & Addictions**
- ❑ **ER Services and EMS**
- ❑ **HomeCare and Community**
- ❑ **Maternal Health**
- ❑ **Palliative Care**
- ❑ **Other**

Regionalization – 1996/97

Care Closer to Home
Accountability
Integration
Quality



Early 2000's



RHAs - 2012



Major Service Delivery Organizations

Regional Health Authorities (5)

CancerCare Manitoba

Shared Health (DSM)

Addictions Foundation of MB



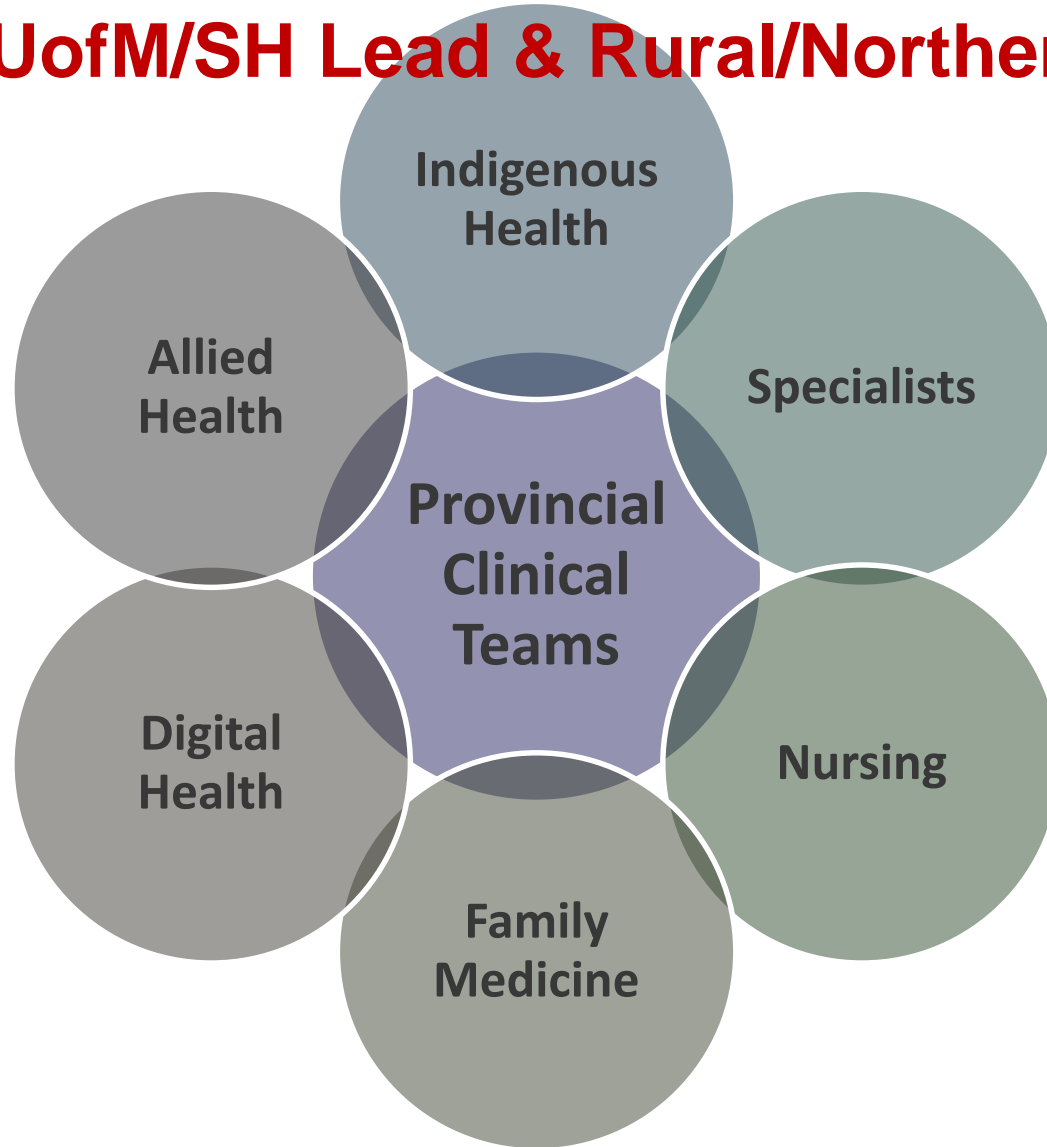
Provincial Clinical and Preventive Services Planning

Clinical & Preventive Service Plan Principles

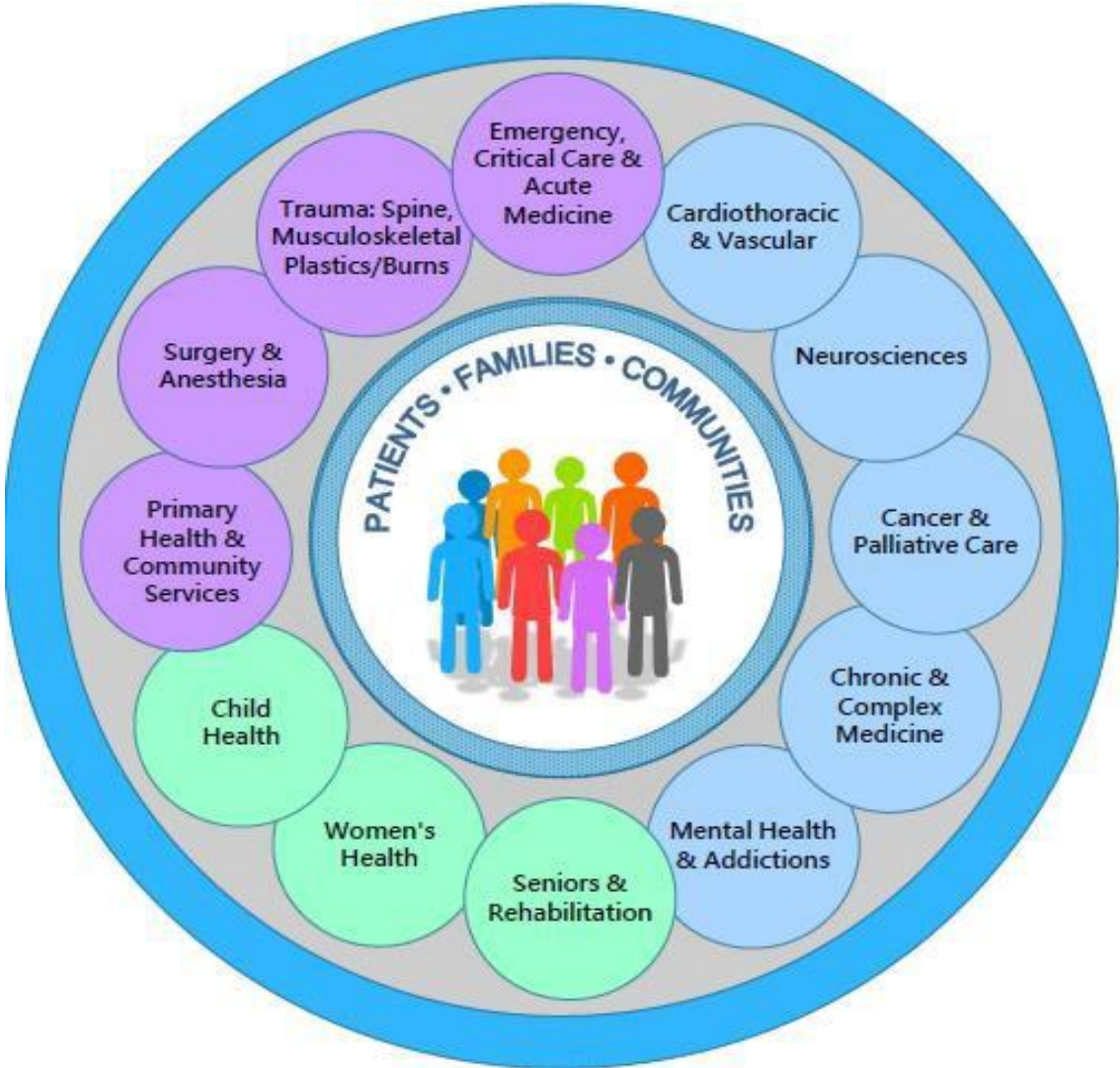
- **Patient-Centred**
- **Sustainable**
- **Equitable**
- **Accessible**
- **Appropriate**
- **Preserve and enhance quality of care**

Team Composition

Co-Leads: UofM/SH Lead & Rural/Northern Rep



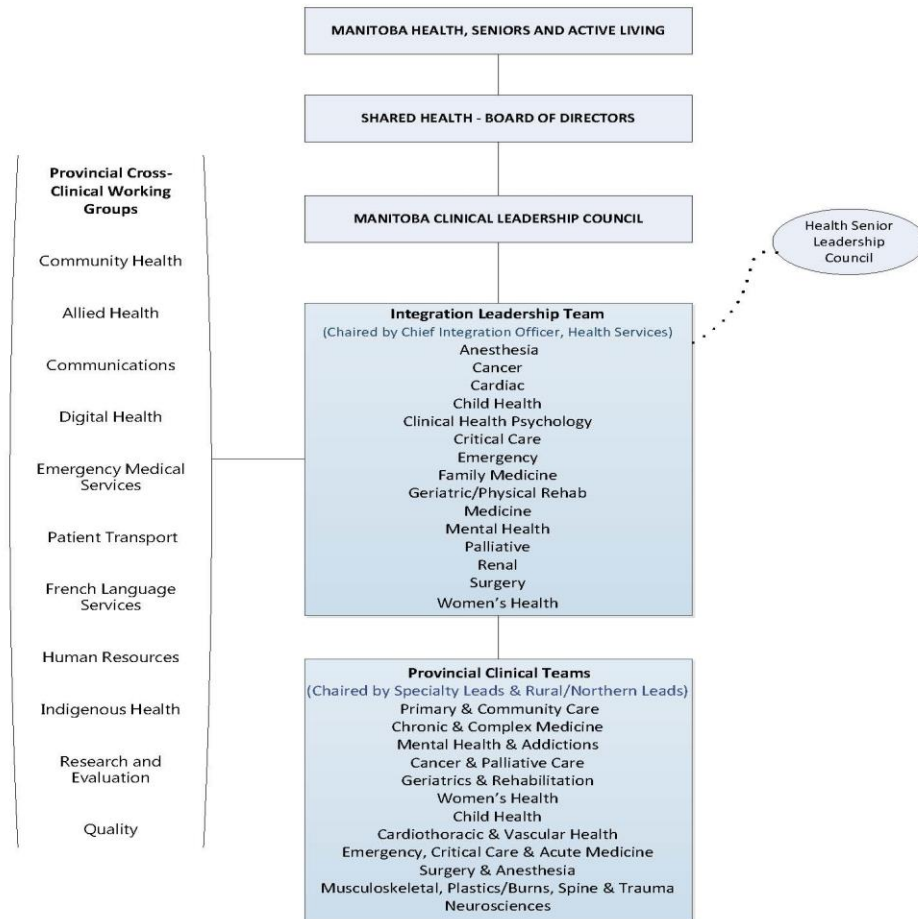
Twelve Provincial Clinical Teams



Planning Governance



SHARED HEALTH CLINICAL GOVERNANCE STRUCTURE



Expert Reports

EMS Review (2013)

ICT and IM&A Reviews (2015)

HomeCare Review (2016)

Peachey Clinical/Preventive Report (2017)

KPMG Sustainability Reports (2017)

Wait Times Reduction Report (2017)

MH & Addictions Report (pending)



Shared Health

**Clinical and Preventive Services Planning
&
Provincial Clinical Services
Provincial Admin/Support Services
Provincial Health Workforce
Quality & Safety**



Shared health
Soins communs
Manitoba

Long Term Care

LTC Opportunities

- **High per-capita investment in PCHs and Homecare relative to peers**
- **High percentage of low care need clients in PCHs and Homecare relative to peers**
- **Reduce admissions to PCH from hospital**
- **Models of care in PCHs**
- **Expand alternatives in Community**

DISCUSSION

Thank you!!